

AFM-N81JC7D20-2MW-EIR

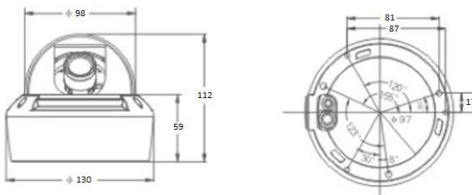
2.1 Megapixel Vandal proof WDR IP Dome Camera



Key Features

- Low power consumption 2.1Megapixel sensitive CMOS sensor, max. resolution up to 1920*1080(16:9)
- 3DDNR digital reduction algorithm make the image clearer
- WDR > 120dB
- Standard H.264 Video Compression for smooth transmission at low bandwidth
- Dual streaming technology
- Smart IR self-adaption, view distance up to 15m, IR will adjust the luminance according to the light conditions (-R model only)
- True day/night converting with Dual IR-cut filter
- Built-in 3 axis bracket for view angle adjustment
- Built-in Web server, fully supports remote viewing, configuration and firmware upgrading
- Support PoE for easy installation and maintenance
- Software watchdog available, camera can resume to work automatically
- Motion detection, Privacy mask, I/O alarm function available
- NAS, SD card storage
- IP66 Weather Proof and IK 10 Vandal Proof
- Support Surface mount, Pendant mount, Wall mount

Dimensions (Unit :mm)



Specifications

MODEL	AFM-N81JC7D20-2MW-EIR
Camera	
Image sensor	1/2.8" CMOS, 2.1 Megapixel
Total Pixels	1920(H) x 1080(V) 2.1 Megapixel
S/N Ratio	More than 50dB
Min. Illumination	Color: 0.2Lux@F1.2; Mono: 0.001Lux@F1.2; 0Lux@F1.2, IR ON
IR Distance	15m
Day & Night	ICR
Lens	3.3-10.5mm
Video	
Video compression	H.264 high profile, MJPEG
Resolutions	Up to 1920 x 1080 (Full HD)
Frame rate	PAL: 1~25fps, NTSC: 1~30fps
Video streaming	Support dual stream with H.264, MJPEG
Pan/Tilt	1 x RS485
Image Setting	Day & Night
	Auto White Balance
	Auto Exposure
	Privacy Mask
	WDR(Low/Middle/High) >120dB 3DNR(On/Off)
Output	CVBS : 1.0 Vp-p / 75Ω composite
Alarm In/Out (Optiona)	In: 1, Out: 1
Network / System Integration	
Security	Password Protection, User access log, HTTPS encryption
Supported protocol	IPv4/ IPv6, RTSP/RTP/RTCP, TCP/UDP, HTTP, DHCP, DNS, FTP, DDNS, PPPoE, SMTP, STP, Multicast, ONVIF
Intelligent video	Motion detection up to 1920x1080
Alarm events	File upload via ftp, E-mail, Notification via email, FTP and TCP
Integration	ONVIF 2.1, SDK or API (H-VMS 4.0/5.0)
Storage Protocol	CIFS, NFS
Physical	
Power Source	DC12V/1.5A, PoE(Power over Ethernet): 802.3af-Optional
Storage	Micro SD / SDHC card, 32GB maximally
Power Consumption	5W (IR LED OFF); 9W (IR LED ON)
Net Weight	1,300g (Camera only)
Vandal proof	IK10
Dimension	φ130×112mm
General	
Operating Temperature	Temperature: -10°C~+60°C
Installation	Surface mount, Pendant mount, Wall Mount
Functionality	
Recording	Local Recording, NAS recording, SD card recording
Privacy mask	3 areas, adjustable
OSD	Time, Date, Video channel, Channel name and user defined
Reliability	Software watchdog available

* Specifications are subject to change without prior notice.